

0999716-12001

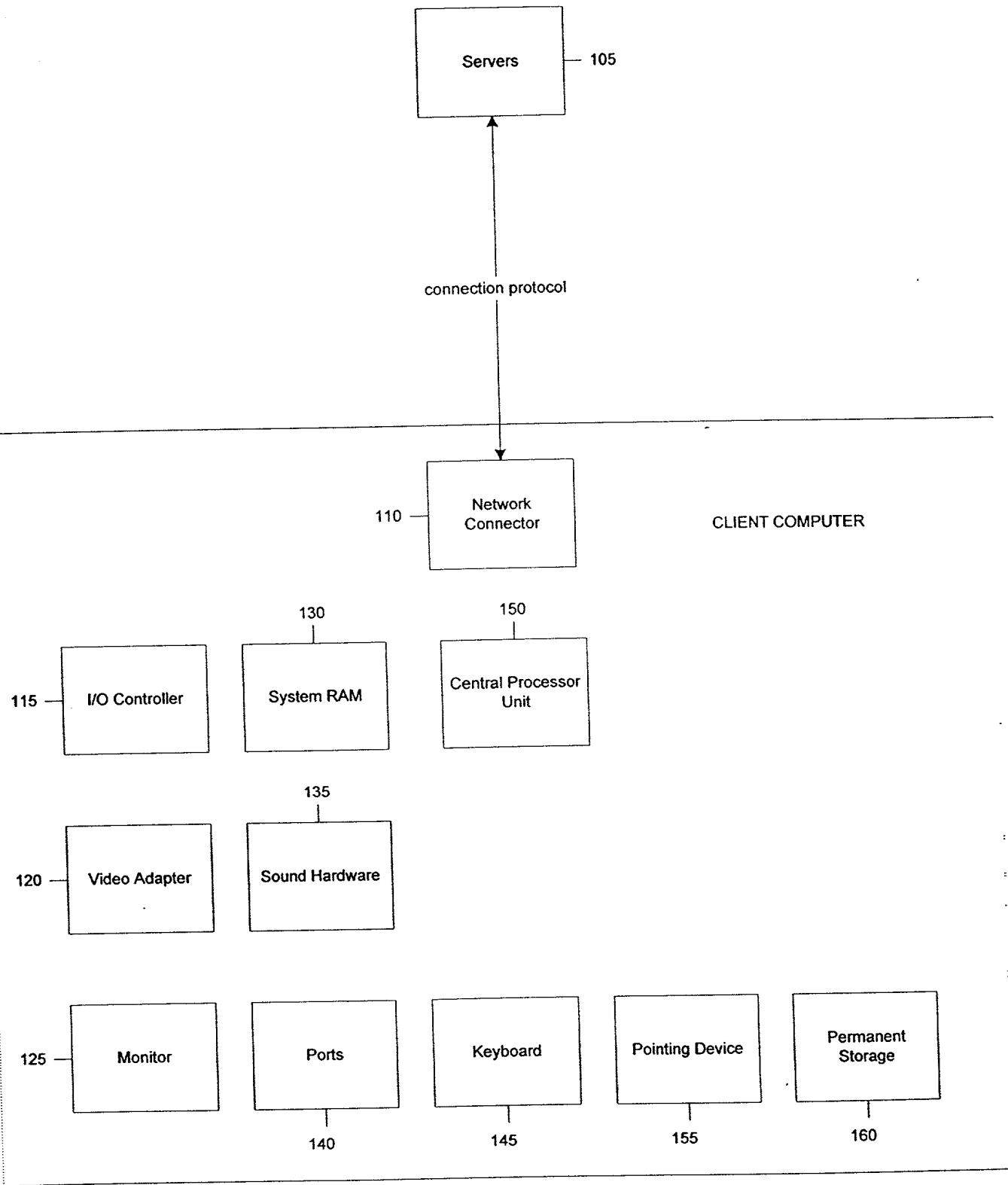
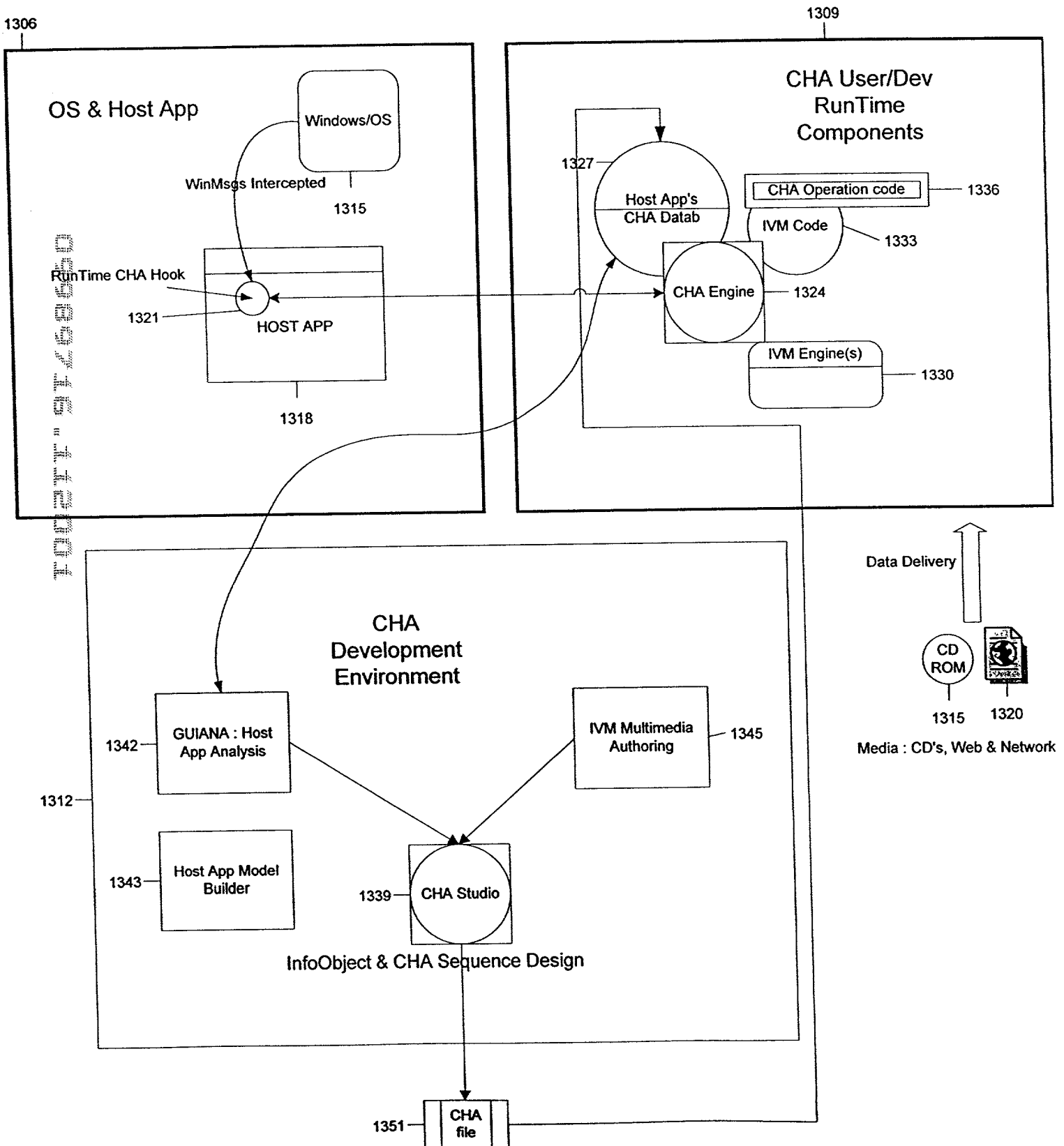


Fig. 1 Client & Server Hardware

# Fig. 1A CHA RunTime & Development Components Overview

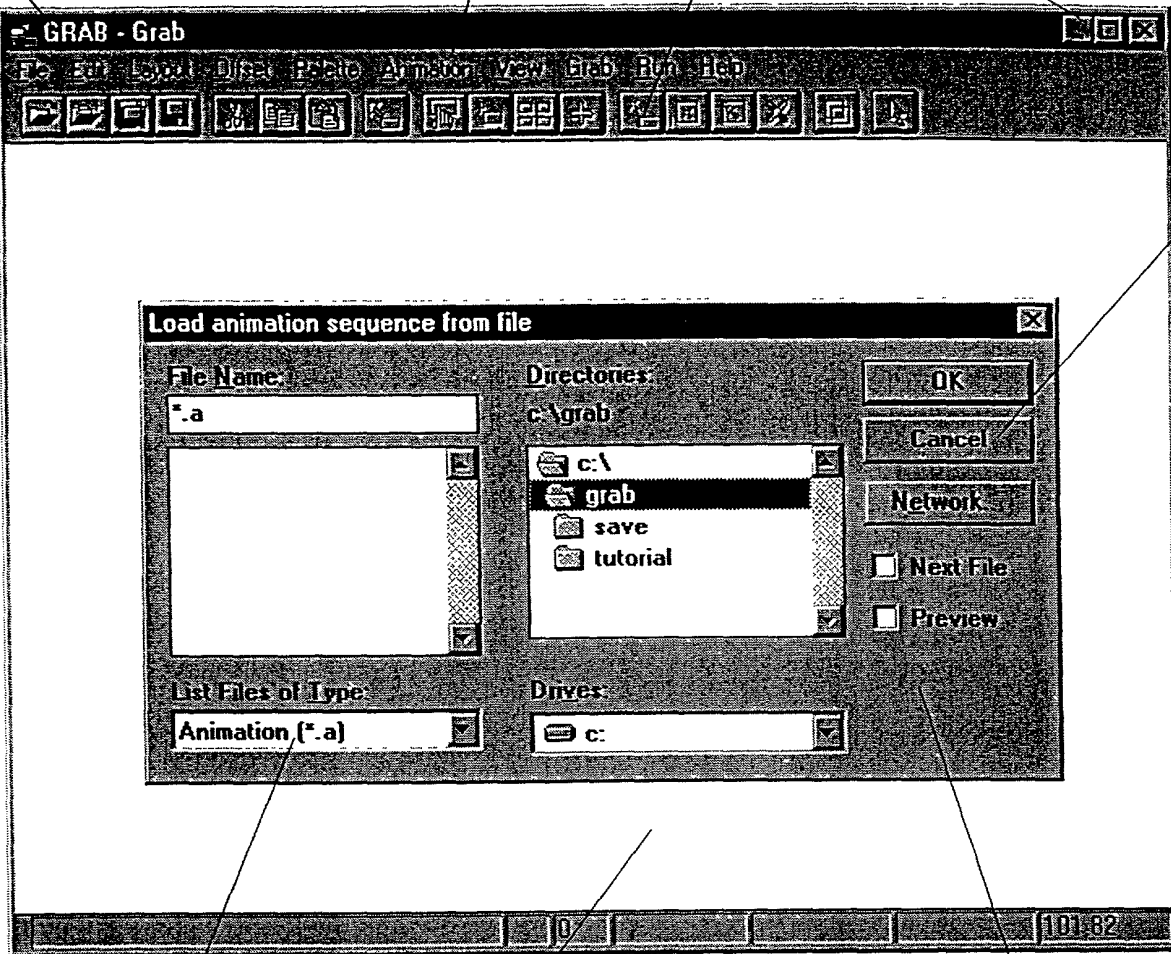


205

210

215

220



225

09989716 112001

240

235

230

Fig. 2 Example Host Application

CONFIDENTIAL

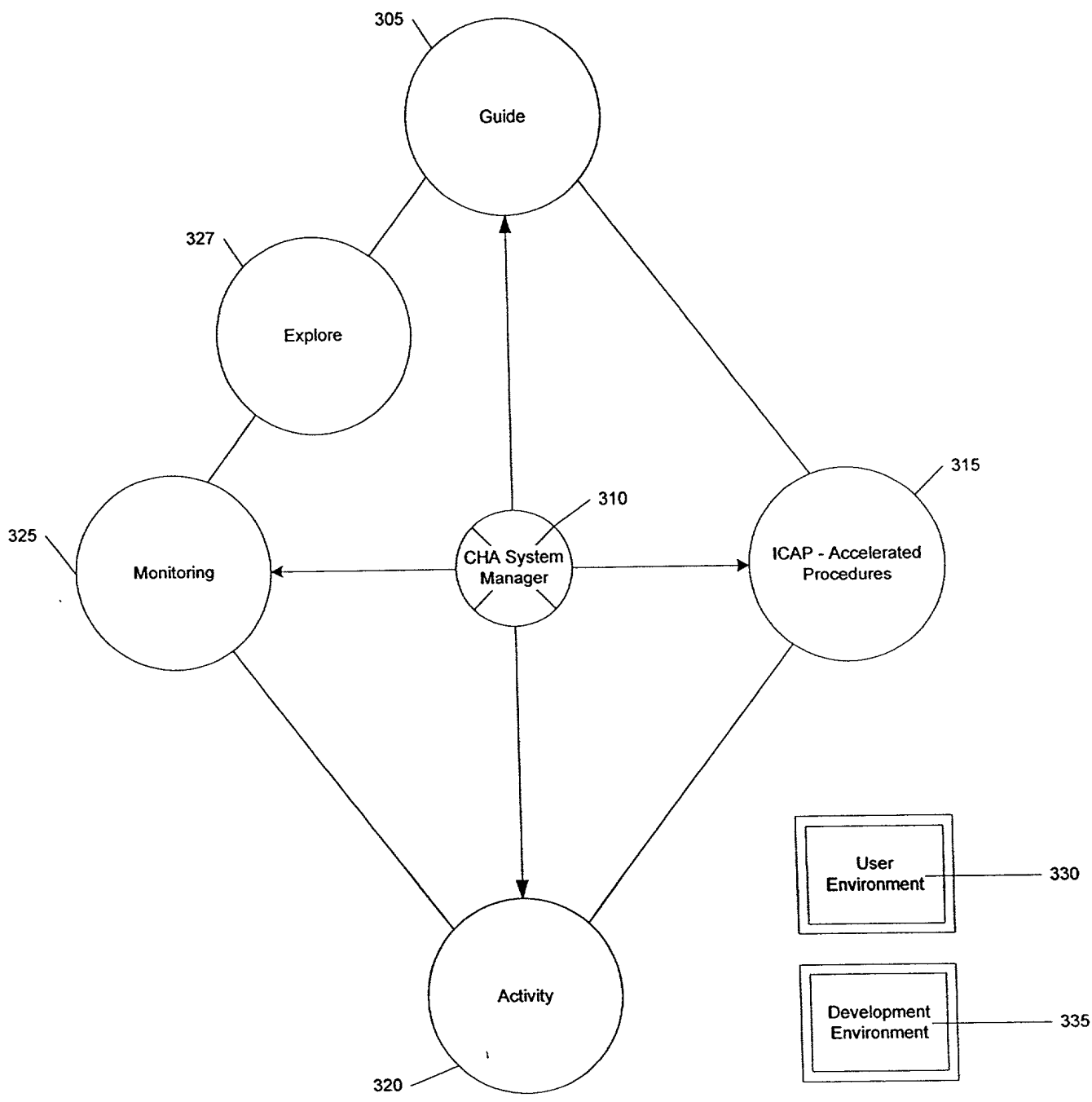


Fig. 3 Main CHA Modes of Operation

0998971K 112001  
FOUO 2/17/98 6:00

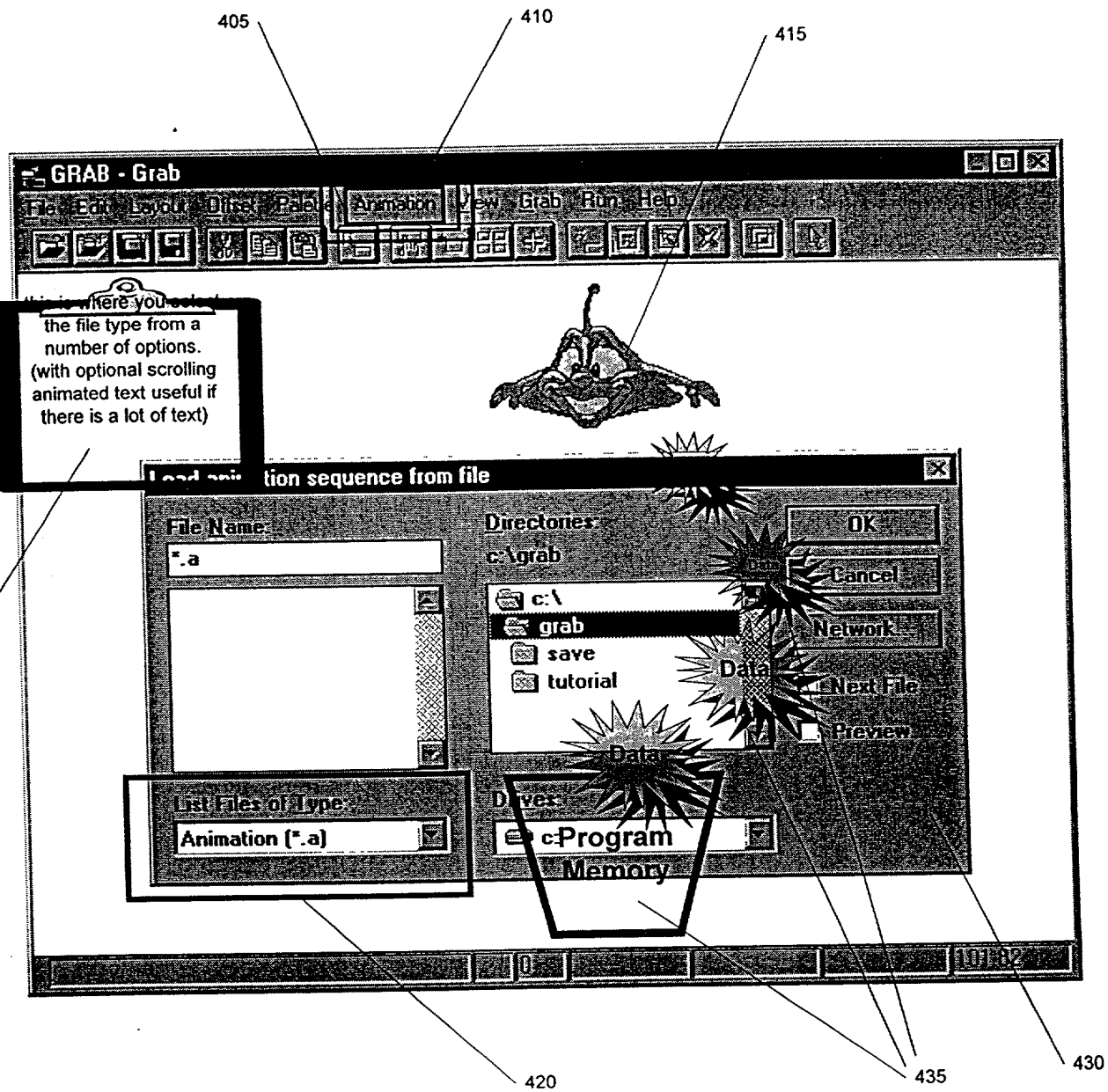


Fig. 4 Interface Overlay & Animated, Graphic & Text InfoObjects

0999716-1.0001

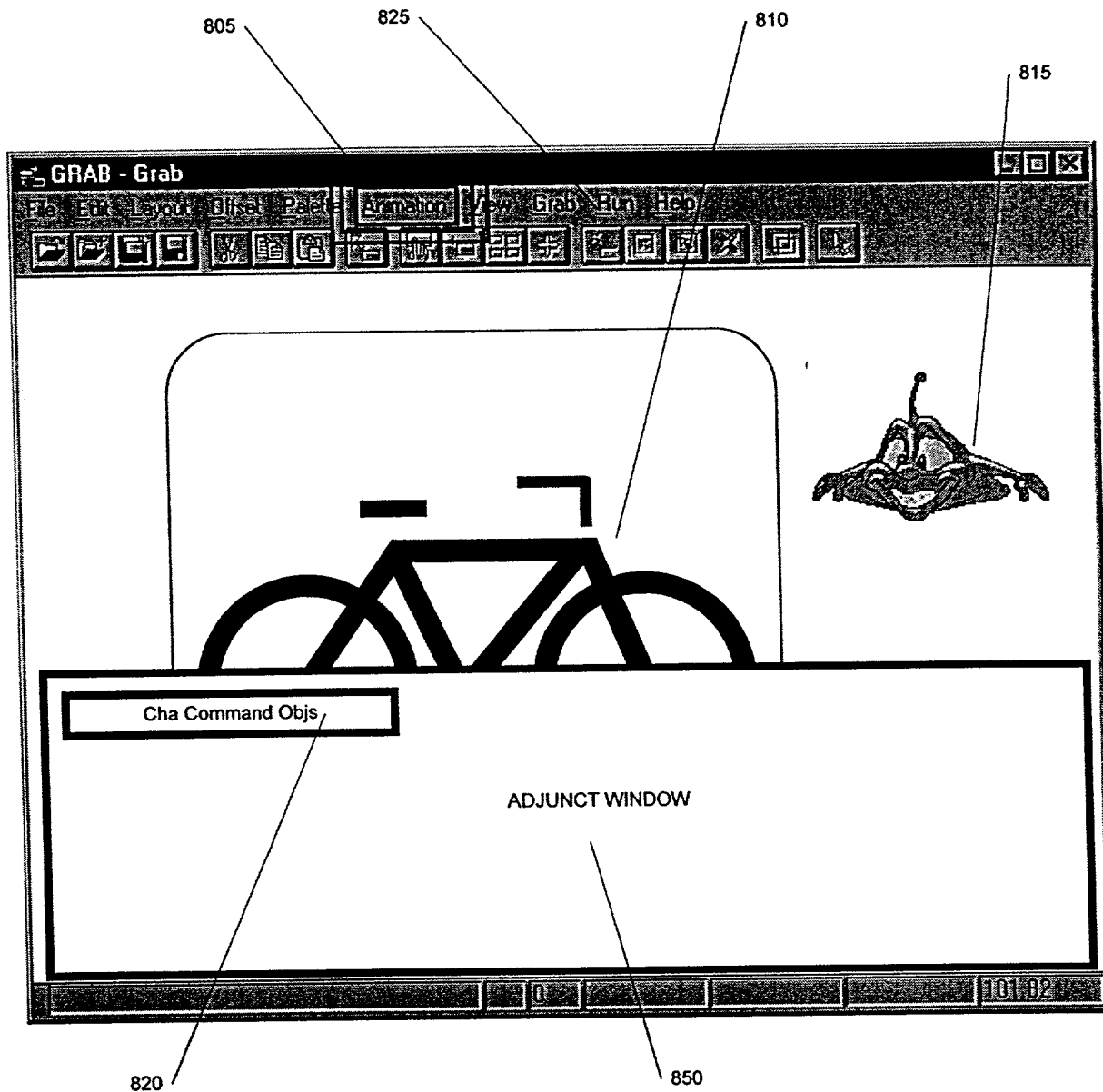


Fig. 5 CHA Interface Overlay, Help Character, and Optional Adjunct Window

0999746-12004

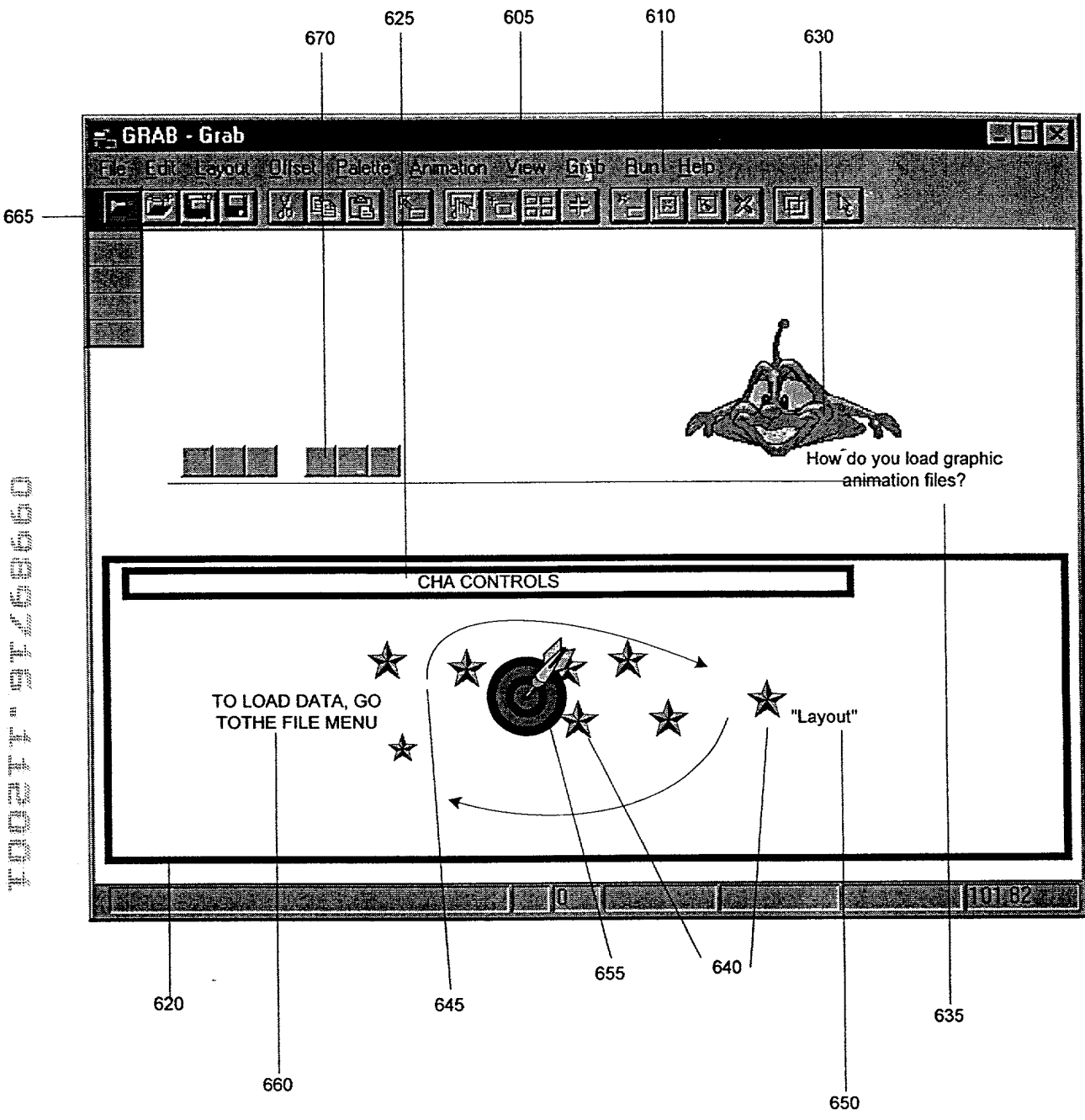


Fig. 6 Activity With Host App Gui Linkage

09989736 412004

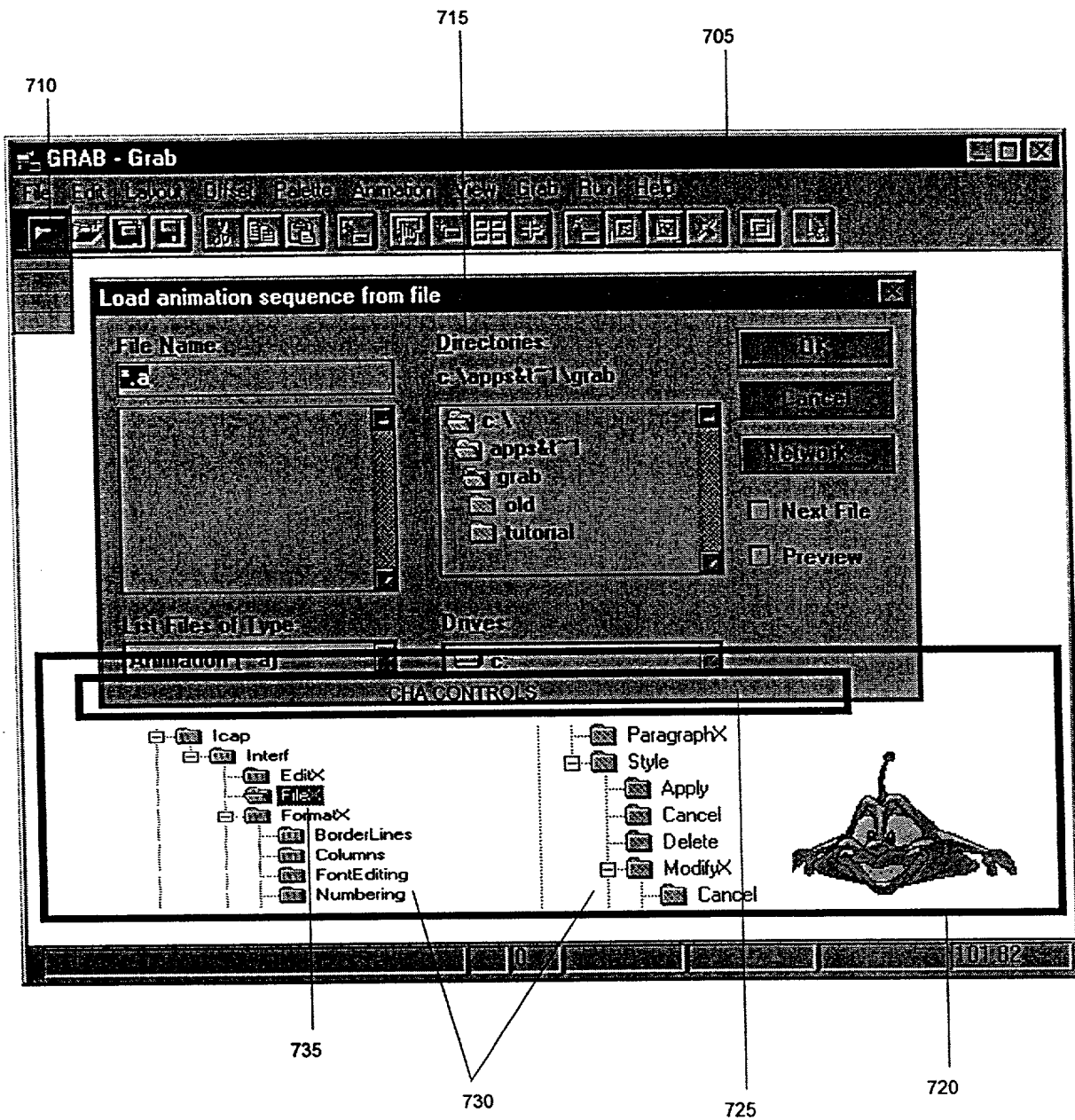


Fig. 6A ICAP Control Map



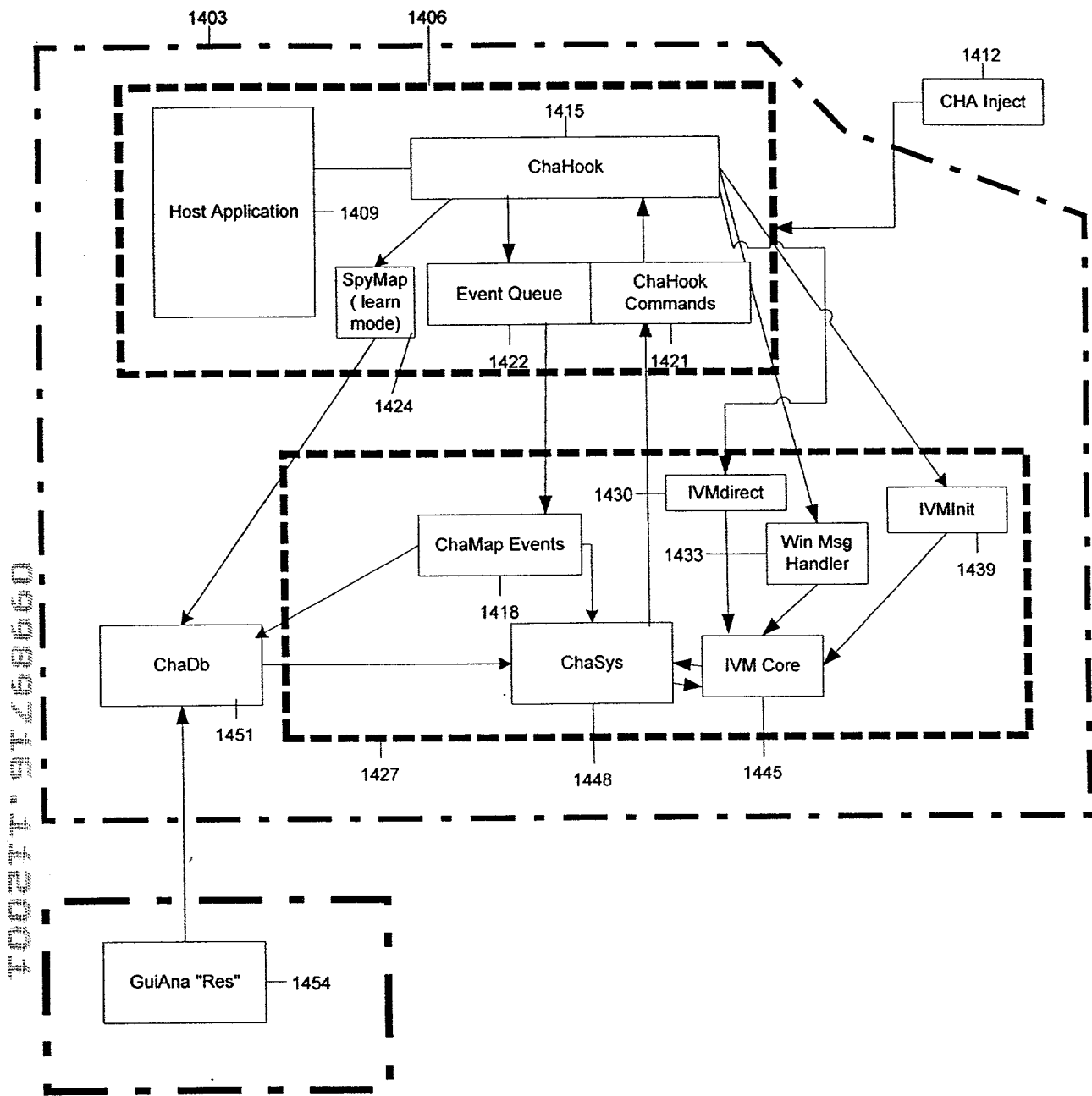


Fig. 7 The CHA Run Time System Summary

09089716-112004

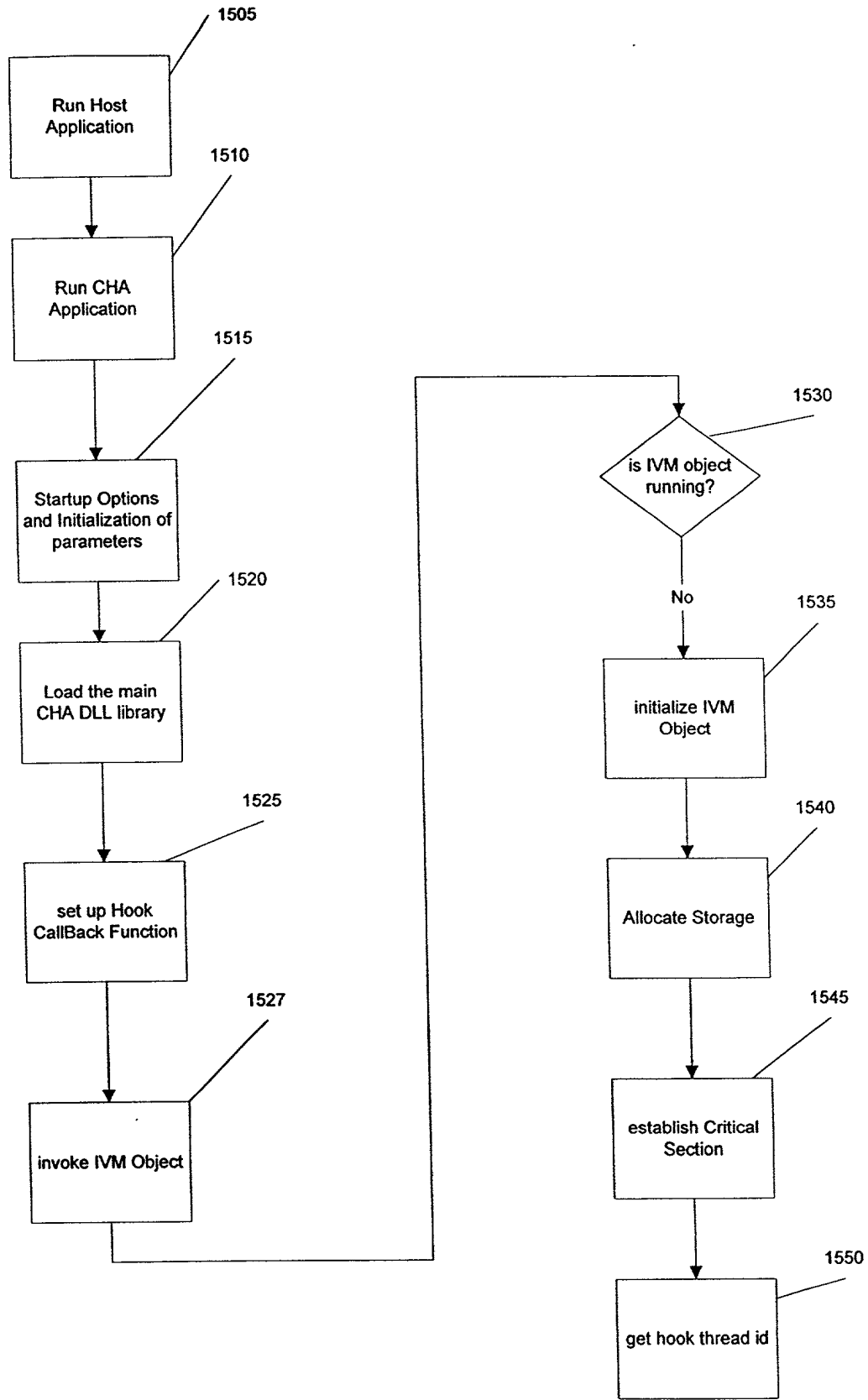


Fig. 8 Run Time Component Initialization

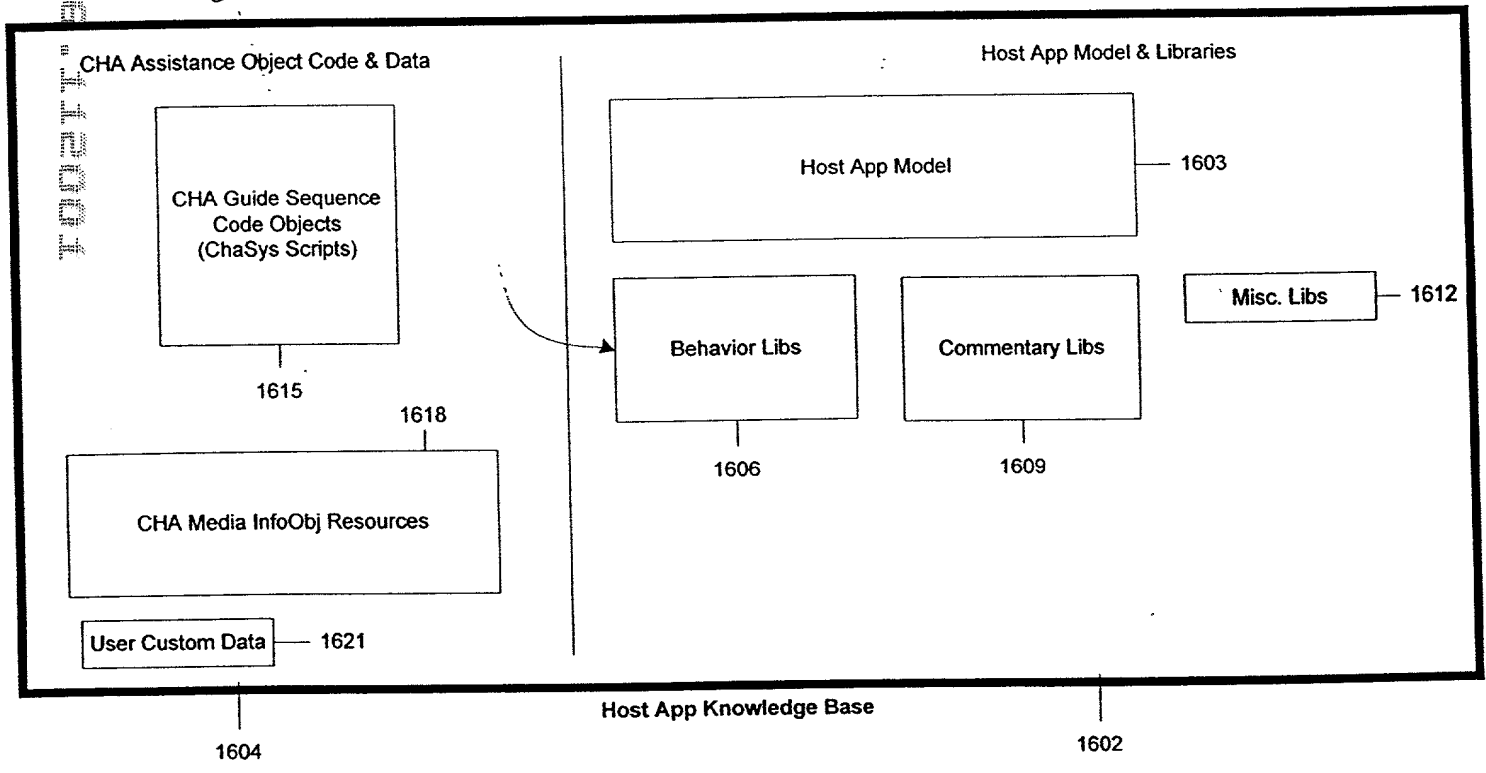
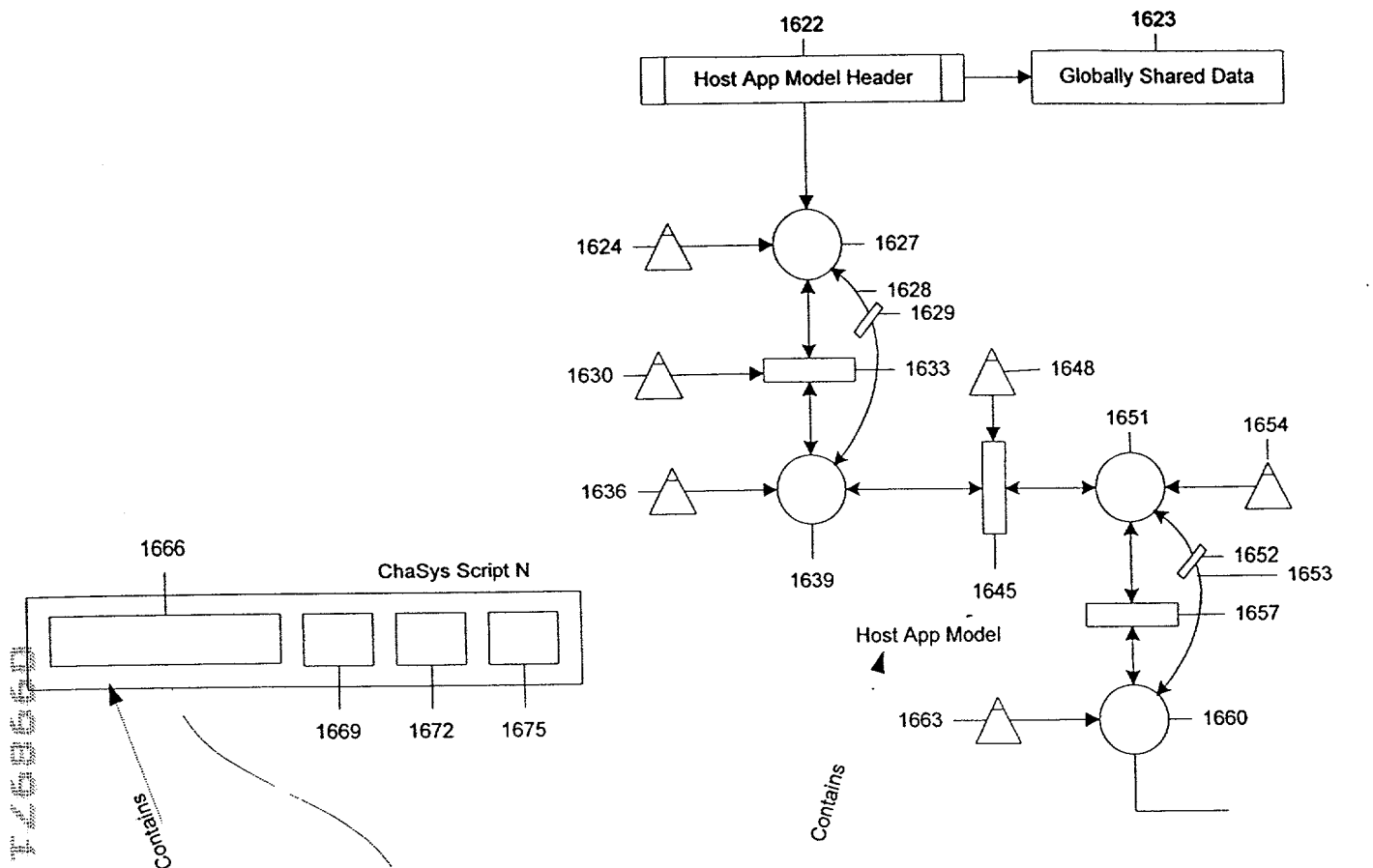


Fig. 9 The CHA Knowledge Base

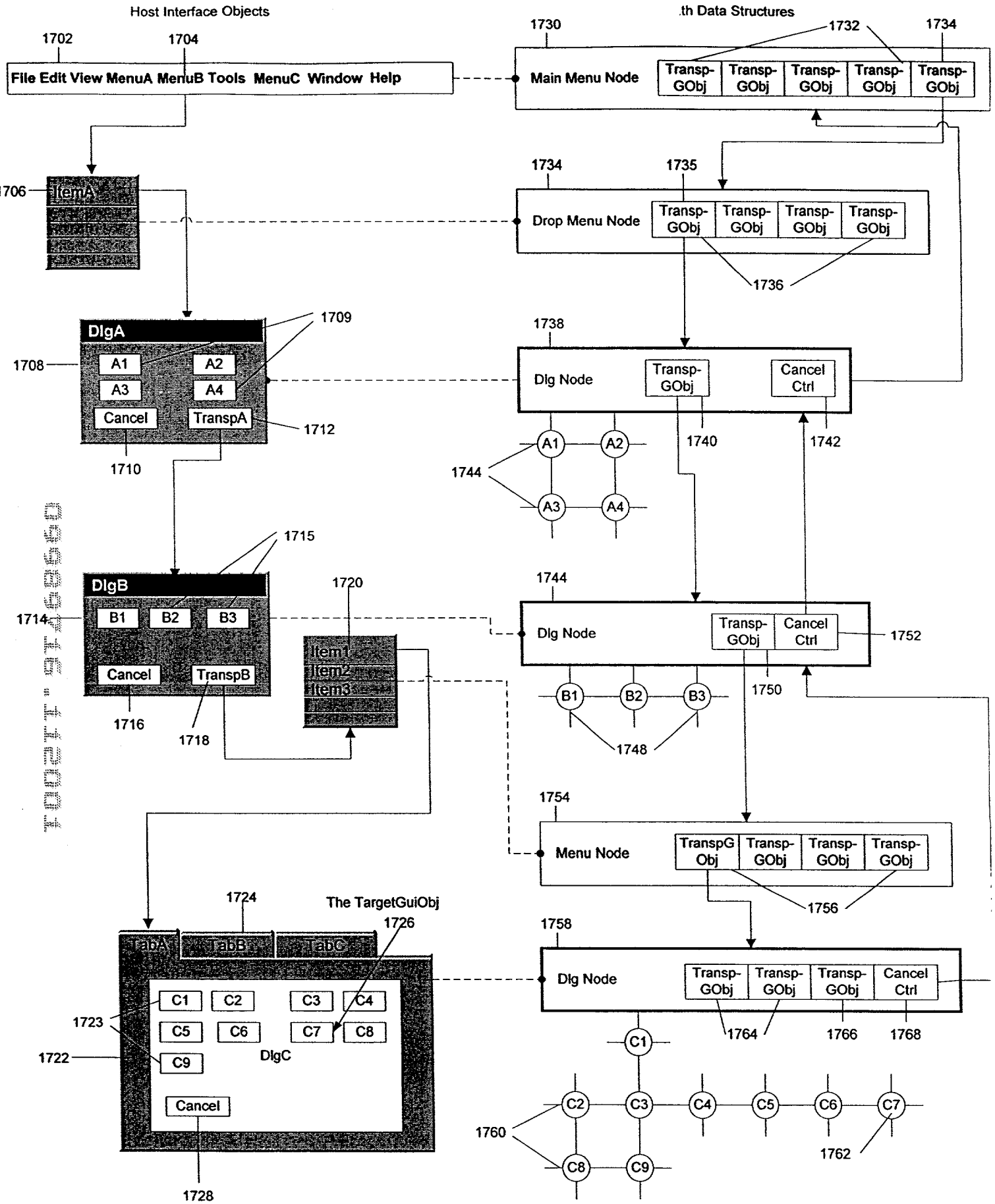


Fig. 10 Host App Transport GuiObjs & Data Structures

09999746-12004

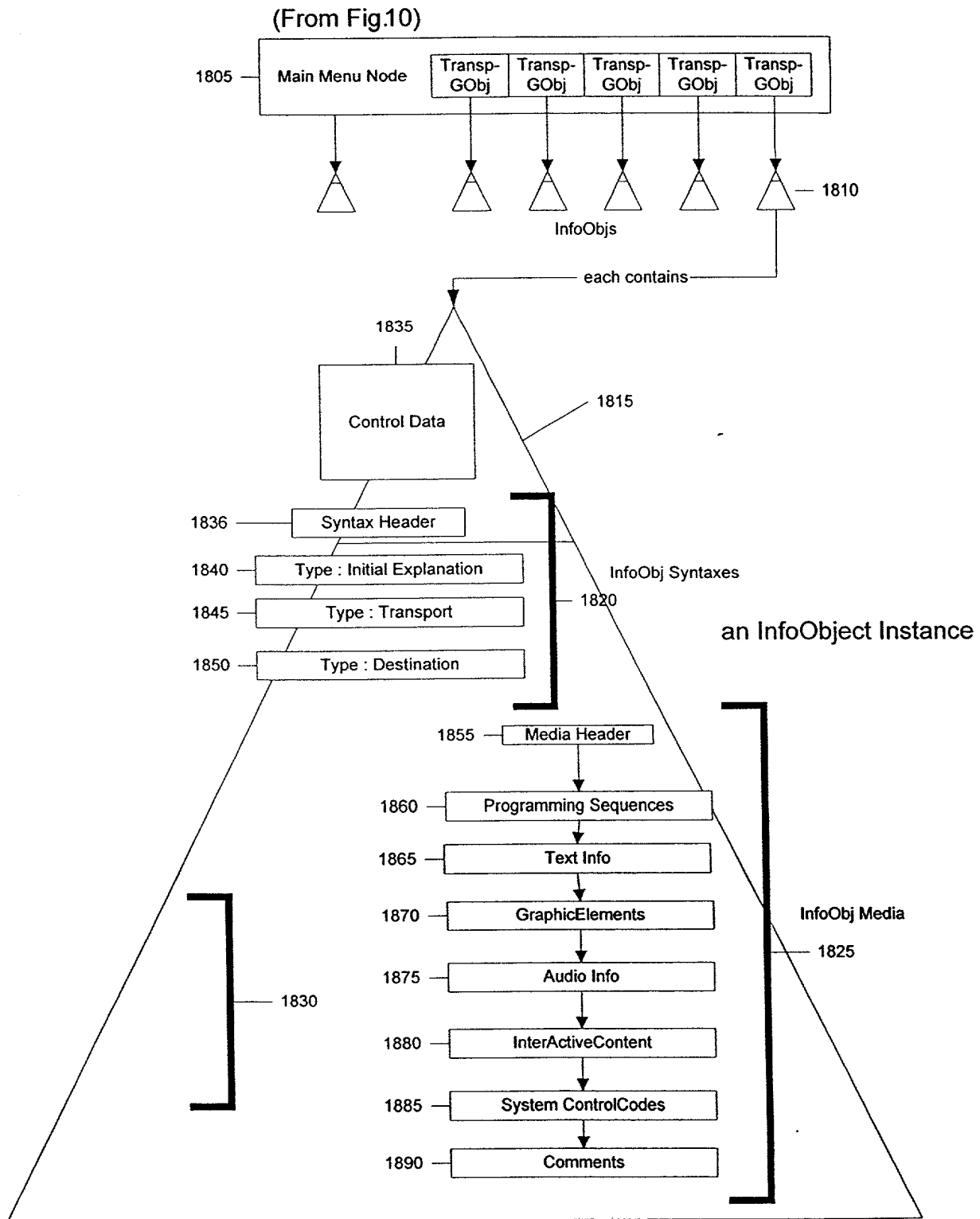


Fig. 11 InfoObject Data Structures

Copyright © 2004

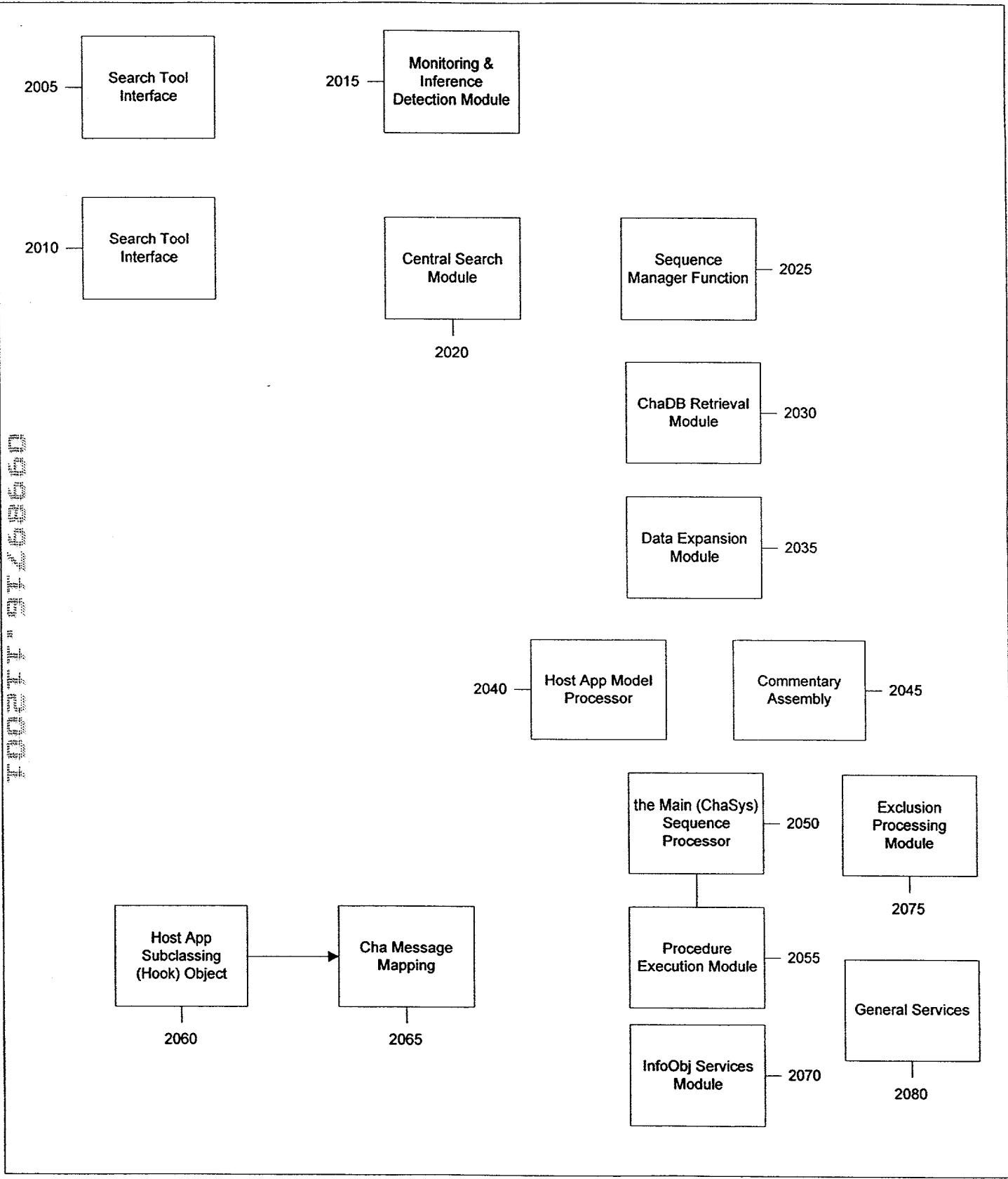


Fig. 12 Guide Sequence Processing Modules

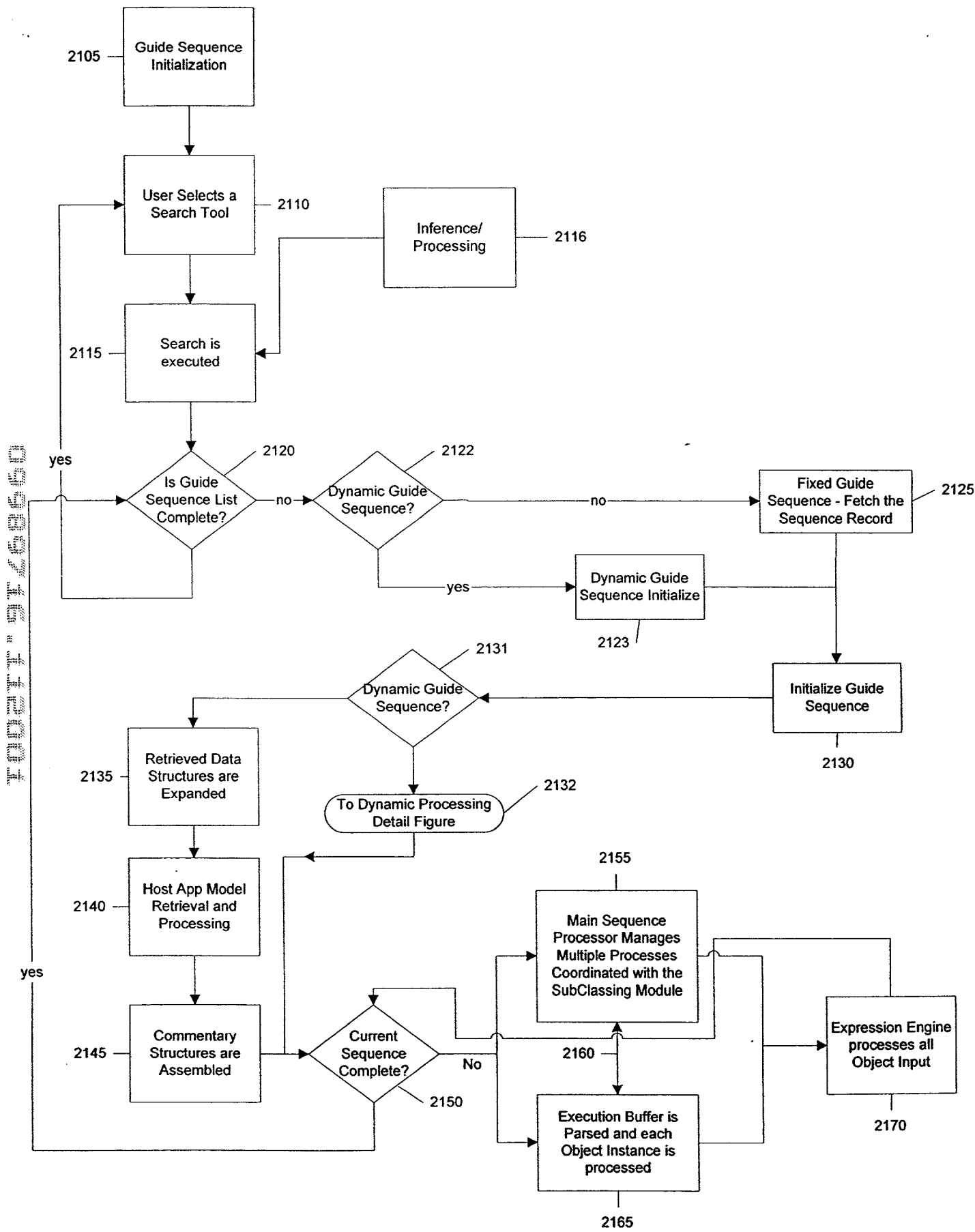


Fig. 13 Dynamic and Fixed Guide Sequence Processing

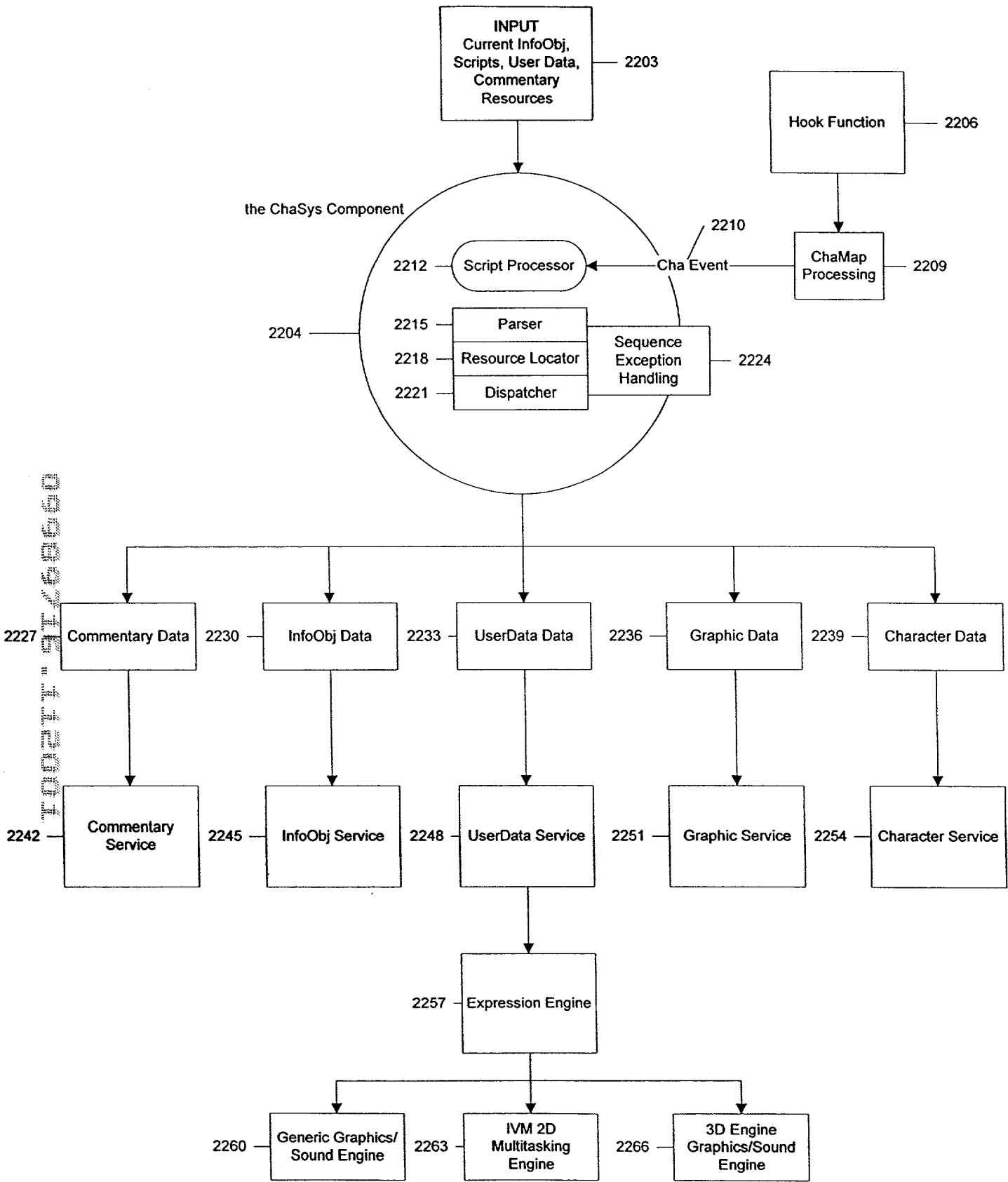


Fig. 14 Guide Sequence ChaSys Object Set Execution



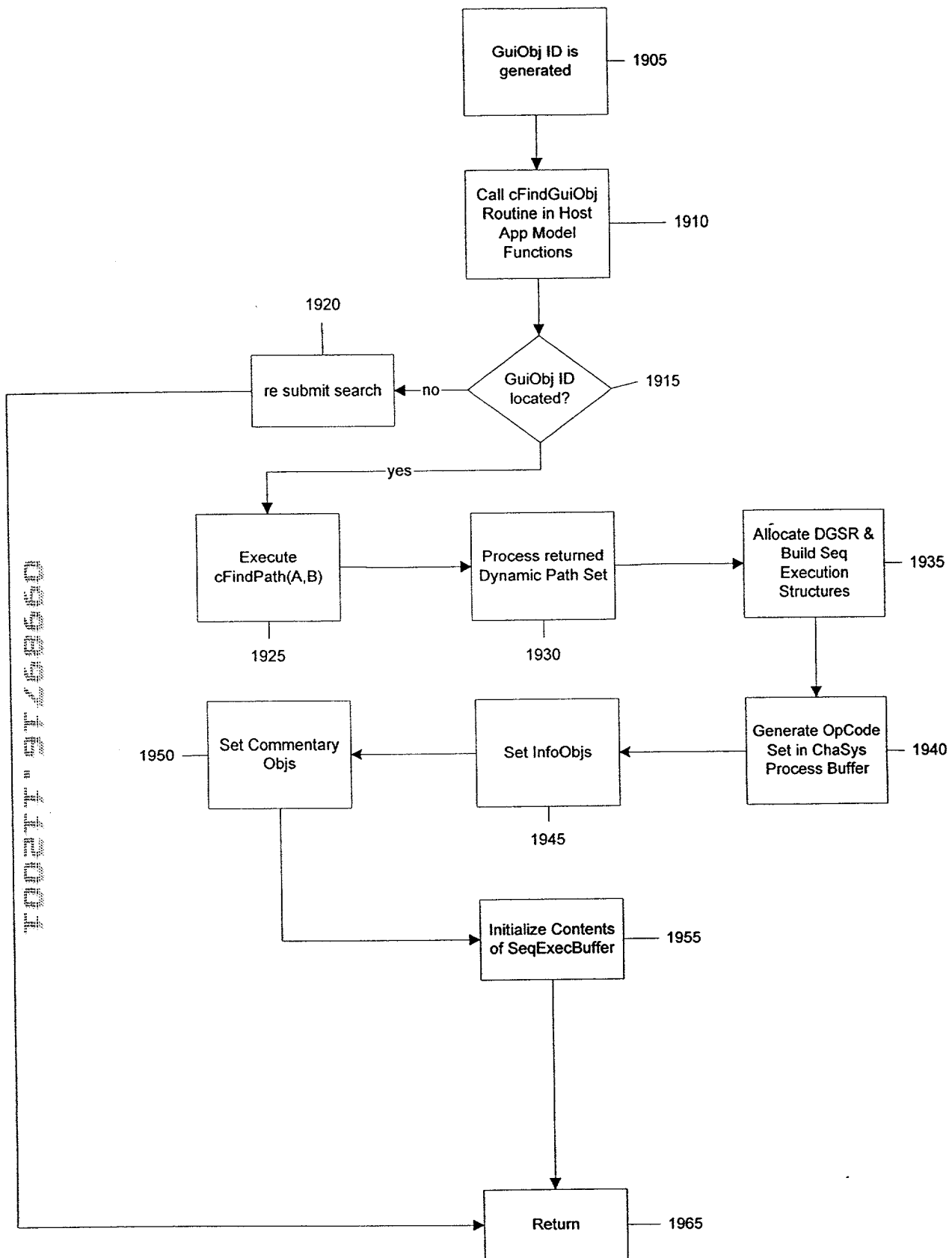


Fig. 14A Dynamic Sequence Processing

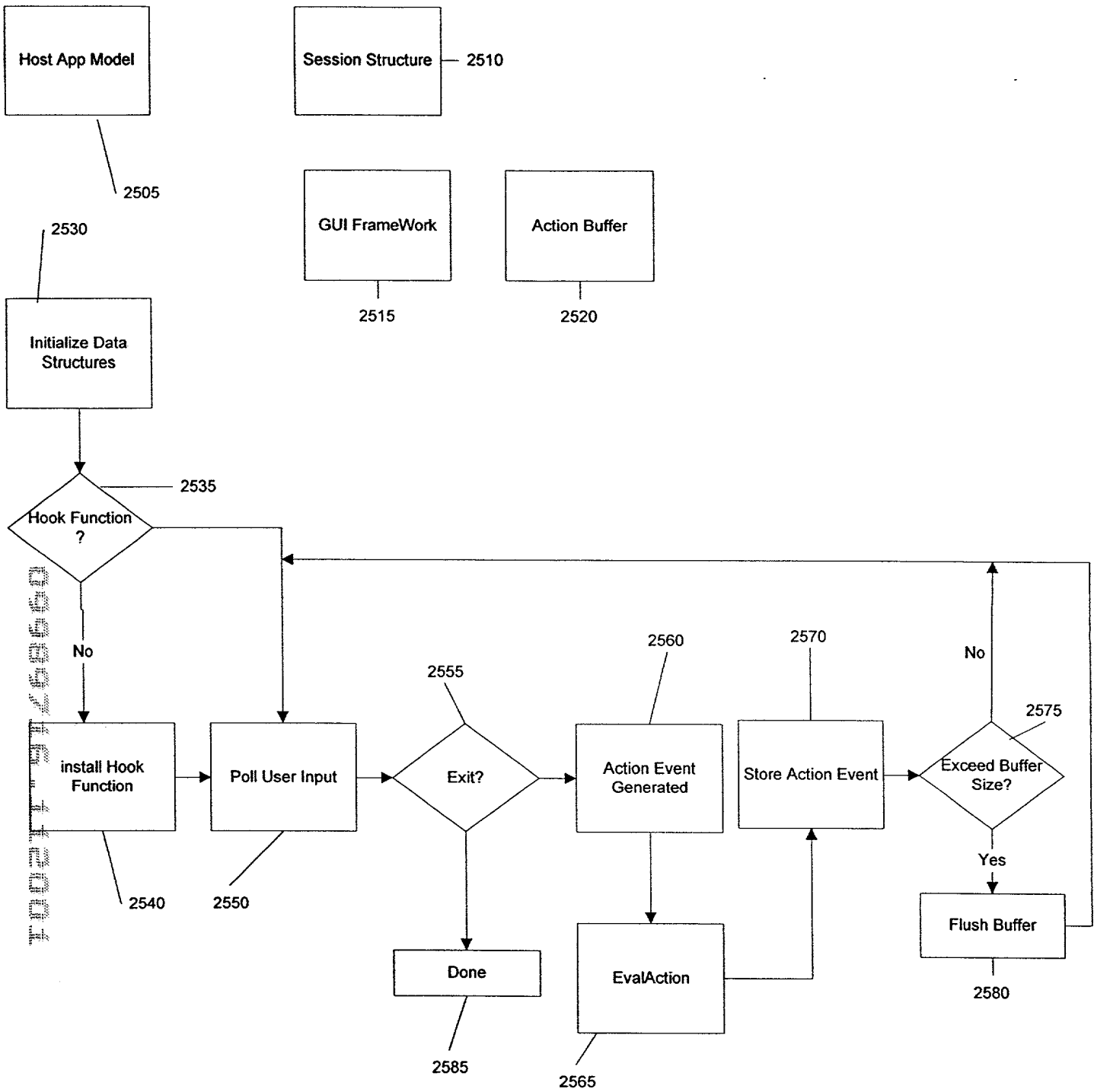


Fig. 15 CHA Monitor Collection Processing

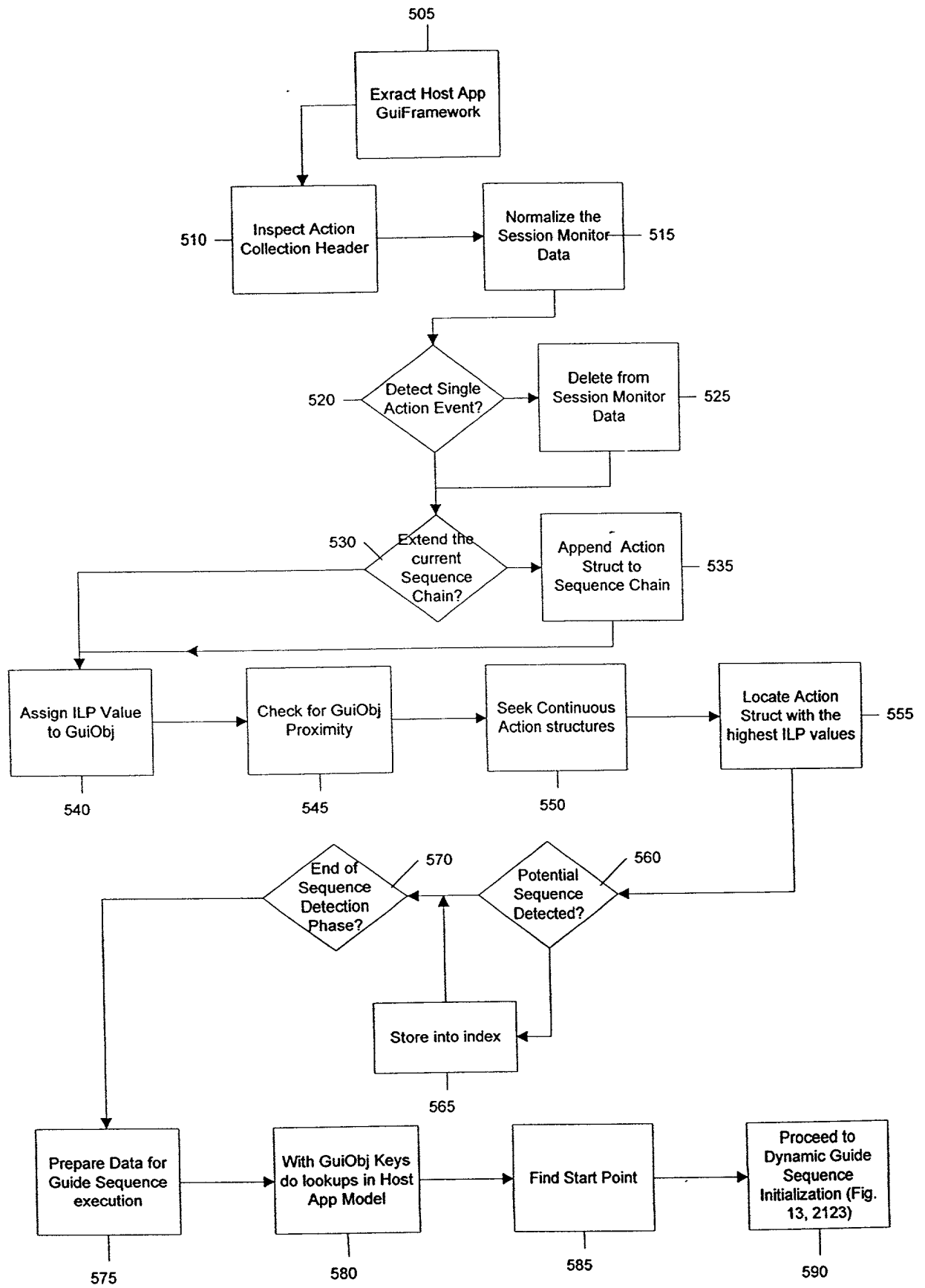


Fig. 15A CHA Monitor & Dynamic Sequence Preparation